

SINGLE STREAM RECYCLING ACCEPTABLE MATERIALS GUIDE



OFFICIAL
RECYCLING PARTNER

PAPER

- Office Paper
- Junk Mail
- Newspaper
- Phone Books
- Paper Bags
- Magazines

CARDBOARD

Pieces 2' x 2' or Smaller:

- Plain and Corrugated Cardboard Boxes
- Food Boxes
- Shipping/Moving Boxes

PLASTIC

Clean, Empty and Rinsed:

- Plastic Containers # 1, 2, 4, 5 & 7
- Jugs & Bottles
- Mixed Rigid

METAL

Clean, Empty and Rinsed:

- Aluminum
- Metal Can
- Pots & Pans
- Clean Foil & Trays

GLASS

Clean, Empty and Rinsed:

- Glass Jugs
- Glass Bottles
- Glass Jars

CARTONS

Clean, Empty and Rinsed:

- Aseptic Containers
- Milk and Juice Cartons
- Juice Boxes
- Soup Cartons

THE FOLLOWING ITEMS SHOULD NOT BE INCLUDED IN SINGLE STREAM

Scrap Metal	Electronic Waste	Waxed Cardboard	NO PLASTIC BAGS
Window Panes Or Mirrors	Paint, Pesticides, Oil	Polystyrene	
Ceramics Or Dishware	Food Or Yard Waste	VCR/VHS Tapes	
Bio-Hazardous Waste	Fabrics Or Clothing	Plastic Cd Cases	
Unmarked Plastics, #3, or #6	Waxed Paper	Hoses	



Waste Management
1-800-796-9696

NO PLASTIC BAGS IN THE RECYCLING BIN

NO PLASTIC BAGS IN THE RECYCLING BIN

The Problem: Plastic Bags do NOT belong in the Recycling Bin

- Plastic bags are not an acceptable material for curbside recycling programs.
- Acceptable Recyclables should never be placed in plastic bags.
- Plastic Bags increase costs at Recyclable Material Recovery Facilities.
- Plastic Bags contaminate and lower the value of Recyclable Materials.

The Danger: Our Employees Safety

The safety of our employees is our utmost concern. Our employees sort recyclables by hand and are in direct contact with every piece of material that is delivered to our Recovery Facilities. When plastic bags are improperly mixed in with acceptable recyclable materials, the bags entwine in the equipment. This causes unsafe conditions and downtime to clear the equipment so it works properly.



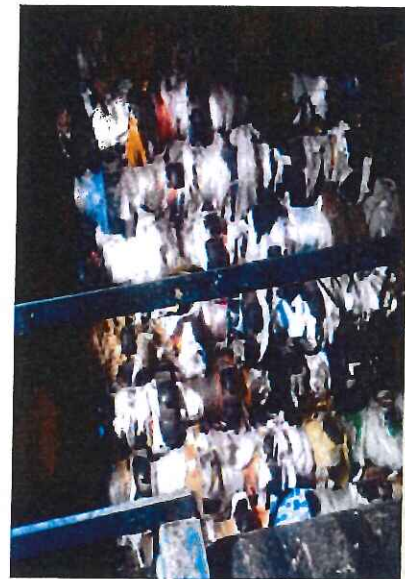
Plastic bags and film hang from a conveyor

The Solution: A Clear Message on how to Dispose of Plastic Bags

For the safety of our employees, it is important that our municipalities and customers publicize proper messaging on how to dispose of Plastic Bags by residents and businesses.

Disposal of Plastic Bags should be in accordance with local disposal regulations and never placed with recyclable material. The proper disposal of Plastic Bags will greatly decrease a dangerous condition for our employees.

- Many grocery stores, co-ops and retailers accept clean, dry plastic bags for recycling.
- Look for plastic bag recycling bins that are usually located at the entrance of the store.



Plastic bags clogs separation equipment that employees have to clear

**North
Regional Business Manager**

Stephen "SK" Klemann
Tel: 607.437.8820
Email: Stephen.Klemann@ReCommunity.com

**Memphis Region (TN, MS, AR)
Regional Business Manager**

Stephen "SK" Klemann
Tel: 607.437.8820
Email: Stephen.Klemann@ReCommunity.com